

Performed and devised by
DJ (Housni Hassan)
Stephanie Newman
Emma Selwyn
Adam Smith

PROGRAMME

NOT F**KIN' SORRY

Presented by **Not Your Circus Dog Collective**
Co-Produced by **The Hale**
and **Access All Areas**

**ACCESS
ALL AREAS**

**THE
HALE**



Supported using public funding by
**ARTS COUNCIL
ENGLAND**

**THE
SOURCE**



University of
East London

RIX.

CONTENTS

Access and content information **3**

About the show **4**

Artist profiles **6**

Cast, creatives and crew **9**

About Not Your Circus Dog,
Access All Areas, and The Hale **11**

Special mentions,
thanks and supporters **14**

ACCESS AND CONTENT INFORMATION

- * Music
- * Swearing
- * Talking about sex
- * Talking about hate crime
- * Talking about people being hurt or killed
- * Some audience participation. You do not have to do this if you do not want to
- * Actors stripping to underwear
- * Actors singing to the audience
- * Actors handing out sweets

Performances of Not F**kin Sorry! will happen in a relaxed environment. There is a relaxed attitude to noise and movement in the auditorium. Most venues will provide a designated 'chill-out space' if you need time away from the performance space.



"A riotous upending of audiences' preconceptions of disability and neurodivergence."

The Guardian

ABOUT THE SHOW

'So, just what is it that you fuckers want? The cracks, the scars? We are sick of being your circus dogs. Not F**kin' Sorry!

Not Your Circus Dog Collective return after their sold-out runs in 2019 and 2022 for more shameless sexy punk crip cabaret.

'Not F**kin' Sorry! is a wake-up call! Life affirming and outrageous cabaret-theatre whereby audiences are welcomed into a risk-taking and brave parody that rightly implicates everyone who enters. It's the story of survival, testimony, resilience, and celebration.

A show by Not Your Circus Dogs Collective
co-produced by Access All Areas and The Hale Arts.

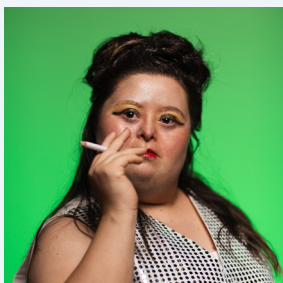
ARTIST PROFILES



Housni (DJ) Hassan

Performer / co-deviser

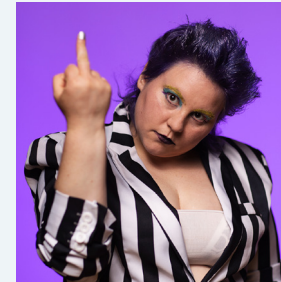
DJ is an actor and dancer. His work with Access All Areas includes 'Imposter 22' at the Royal Court in 2023, 'unReal City' at Battersea Arts Centre in 2020 and Brighton Dome 2022 in collaboration with dreamthinkspeak; 'MADHOUSE re:exit' at Shoreditch Town Hall and the Lowry in 2018, and a national tour of 'Eye Queue Hear' in 2014. DJ also performed in 'The Molly House' at Duckie in 2021. He also performed in 'Super Hot Hot Dog' in 2022, 'Origami Atoms' in 2015, 'Hearts and Faces' in 2015, and 'The People Race the Fish' in 2016 for Corali Dance Company. His two solo shows 'The Manifesto for a Perfect Cup of Tea' and 'Over' have toured nationally and internationally. He also toured in 2023 with disabled led group Freestylers production 'Everybody With Me Always'. In 2021 he became one of 3 Associate Artistic Directors at Corali.



Stephanie Newman

Performer / co-deviser

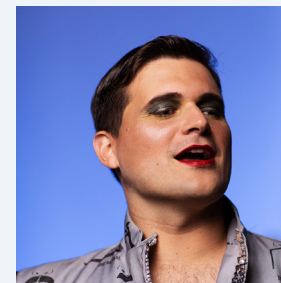
Stephanie starred in 'Imposter 22' at the Royal Court Theatre in 2023. She co-created and performed in 'unReal City' at Battersea Arts Centre in 2020 and at Brighton Dome in 2022 in collaboration with dreamthinkspeak; and 'Joy' at the Theatre Royal Stratford East in 2017. Steph also performed in 'The Molly House' at Duckie in 2021.



Xandri/Emma Selwyn

Performer / co-deviser

Xandri/Emma has devised and performed two solo shows 'Binariesbegone' performed in 2019 at Battersea Arts Centre Occupy festival, as part of the GLYPT pride festival and the Autism Arts festival at the University of Kent. They has also performed 'My Hands and Feet are Wiggling' at Rich Mix in 2016 and has since performed the show in Norway and at the Aespia festival. They also starred in 'The Molly House' at Duckie in 2021. The same year, they made a directorial debut in 'The Interrogation', an app-based immersive show which went on to tour nationally. They co-directed NHS England's Oliver McGowan Mandatory Training films, and they also teach on the Performance Making Diploma.



Adam Smith

Performer / co-deviser

Adam is a musician, composer, actor, cabaret artist and facilitator. He graduated from Goldsmiths College with a BMus in Music in 2013 and MMus in Composition in 2015. He composed some of the music for the previous staging of 'Not F**kin' Sorry'. Adam performed in 'The Molly House' at Duckie in 2021, and staged a national tour of 'Everyone With Me Always' by Deptford Freestylers in 2021-2022. Other professional performances include productions by Facefront, Vital Xposure, Blue Sky Actors and Mind the Gap. Adam is Associate Director of Take Part and has also worked as a facilitator for various theatre companies.



Liselle Terret

Director / co-deviser / co-writer

Liselle is a neuro-divergent theatre practitioner, and Associate Professor in Performance at University of East London. She directs, devises, teaches, writes and performs (sometimes as Doris La Trine) new work. Most recently, Liselle received a Foyle Foundation Commission that led to a residency at Battersea Arts Centre 2022. In 2019, she curated and hosted for Women of the World's 'Wickedly Wild Cabaret' at Southbank Centre and 'Take Up Space Cabaret' for Royal Court Theatre. With Access All Areas, she co-founded award-winning Performance Making Diploma for learning disabled and autistic artists, that led to her co-founding Not Your Circus Dog Collective.

All of the performers graduated from Access All Areas Performance Making Diploma at the Royal Central School of Speech and Drama and are all Associate Artists of Access All Areas. They are all part of the cabaret group Not Your Circus Dog Collective.

CAST, CREATIVES AND CREW

Creatives & Support Staff

Heather Johnson	Assistant Director / Creative Support
Emily Norris	Company Stage Manager
Aoife Lennon	Creative Support
Unique Spencer	Creative Support
Anna Clock	Sound Designer
Roly Botha	Sound Associate
Stacey Sandford	Lighting Designer Costume
Tim Spooner	Designer
Janine Fletcher	Choreographer
Lou Cope	Dramaturg
Ali Gordon	BSL Interpreter (New Wolsey Only)

The Hale

Daisy Hale	Lead Producer
Sean Brooks	Associate Producer
Riss Obolensky	Personal Assistant / Support Worker

Access All Areas

Nick Llewellyn	Artistic Director
Patrick Collier	Executive Director
Matt Malby	Senior Producer
Lucy Andrews	Access Manager
Katie Wheeler	Access Officer
Megan Rogers	Company Coordinator
Hannah Dingle	Digital Content Producer
Eve-Lyne Bertrand	Marketing Officer
Kim Morgan	PR

ABOUT

About Not Your Circus Dog Collective

Not Your Circus Dog Collective (The Dogs!) consist of learning disabled and neurodivergent performance artists creating crip, queer performance. The Dogs are an associate company of Access All Areas. As well as "Not F**kin' Sorry!", in 2022, Duckie commissioned The Dogs to create and perform 'Molly House', for Princess Promenade at Vauxhall Pleasure Gardens Queer Georgian London.



About Access All Areas

Access All Areas makes award-winning, disruptive performance by learning disabled and autistic artists.

Our productions create intimate moments of interaction between performers and public, occupying unexpected spaces in venues, on the streets, online, and in public buildings.

As well as making shows, our company of Associate Artists works to make our culture more inclusive for learning disabled and autistic talent. We engage communities, train artists of the future, and work closely with TV, film, and theatre companies to make their work and workplaces more accessible.

We've developed a programme of work that challenges exclusion at every level of our culture. All our work, from productions, to consultancy, to creative workshops, is co-led by Access All Areas' learning disabled and autistic artists, ensuring lived experience drives everything we do.

About The Hale

The Hale is an arts producing company specialising in experimental, socially-engaged work that is not restricted by form. The company exist to produce and develop artists who have been traditionally ostracised from mainstream spaces with a focus on Queer, Trans, Global Majority & Learning Disabled & Neurodivergent identities. The Hale describes itself as 'your cultural nightclub'; in any room anything could be happening. They make shows, parties, cabarets, workshops, digital happenings, cultural events that can happen anywhere, anytime. The company aims for art as protest as well as art for fun and think that often they can be the same. The Hale's work is countercultural, care focused and transparent with models of co-creation and non-hierarchy. The company strives to consistently share their process to both keep an archive of marginalised work, but also to demystify the practice of producing. Recent work includes 'BLUBBER' at Edinburgh Fringe Festival, 'My Uncle Is Not Pablo Escobar' at Brixton House, 'Welcome Home' at Soho Theatre and 'If You Love Me This Might Hurt' at Camden People's Theatre.

SPECIAL MENTIONS, THANKS AND SUPPORTERS

"Not F**kin' Sorry!" is dedicated to the memory of Katharine Araniello, a f**kin' massive inspiration to us all.

With extra thanks to: Zennie Terret, Adam Seaman, Nick Llewellyn, Simon Casson, Clare Qualmann, Katy Cracknell, Barry Churchill, Elinor Keber, Kritee Gower, Gosia Kwiatkowska and Sue Williams.

In the show, Emma describes three examples of discrimination and hate crime all based on real events, however all names are fictitious. The list of 25 names read-out are profiled victims of disability hate and mate crime.

For support on any of the issues raised in NFS!:

www.mencap.org.uk/advice-and-support
Tel: 0808 808 1111 / Email: helpline@mencap.org.uk

For comments about the show email
daisy@the-hale.com

We really need your feedback
about Not F**kin' Sorry!



SCAN RIX QR Code

OR www.rixeasysurvey.org/kiosk/ZXM8

OR Email rixadmin@uel.ac.uk

with "NFS! COMMENT" in the subject heading"

**Thank you to our funders, without whom
this work would not be possible.**



Supported using public funding by
**ARTS COUNCIL
ENGLAND**

**THE
SOURCE**



**University of
East London**

RIX.



**THE
HALL**

**ACCESS
ALL AREAS**